

**PHILIPS**

Ultrasound

Compact 5000 series



**It's not just compact.  
It's compact without compromise.**

Philips Compact Ultrasound System 5000 series for general imaging

# Philips performance and portability like never before

You need quick, high-quality answers, every single time. Now you can bring the value of exceptional ultrasound to more patients in your facility, more often. The Compact 5000 series gives you superb image quality, flexibility and standardized workflow that were made for the increasing challenges of healthcare.



## Familiar touchscreen, user interface and high-performance transducers

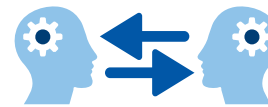
shared across the Compact 5000 series, EPIQ Elite and Affiniti systems



**Sealed control panel** offers enhanced cleanability



**Easy connectivity** using WiFi to share images and reports



**Real-time collaboration with colleagues** through Philips Collaboration Live\* so clinicians can securely talk, text, screen-share and video-stream directly from the system



**Award-winning compact design** for easy mobility that fits tight spaces with ease for bedside scanning



reddot award  
product design



**Long battery life** for up to 2.5 hours of scanning with extended batteries

\* Contract required. Collaboration Live is designed to enable clinical collaboration and consultation on the Philips Compact Ultrasound System 5000 series, but is not intended for diagnostic use on that series. Collaboration Live is intended for clinical collaboration, consultation and remote diagnostic use on Philips EPIQ and Affiniti ultrasound systems, release 9.0 or higher.

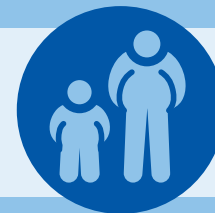
# Right performance, first scan



93% of users agree that the system performed to the user's expectations for a mobile system\*



90% of users agree that the common UI and workflow shared with EPIQ Elite and Affiniti may help reduce user training\*

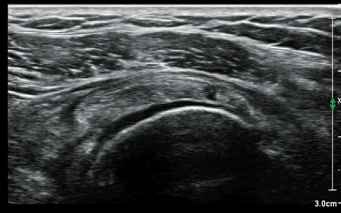


Success across all of your patient types, imaging departments, patient bedside or remote locations.

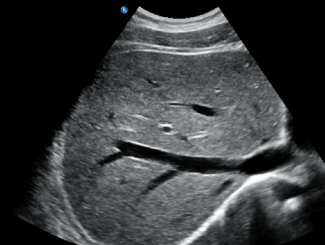
## The right diagnosis, right away



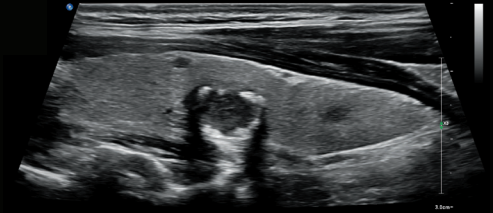
Longitudinal liver with inferior vena cava, hepatic veins and abdominal aorta



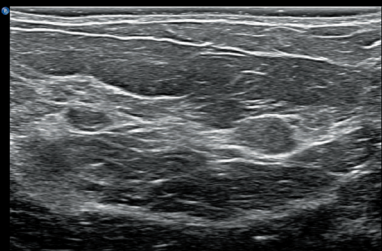
Abnormal supraspinatus tendon with small partial thickness tears



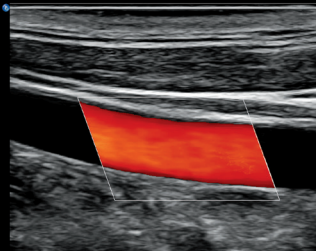
Transverse liver with hepatic veins



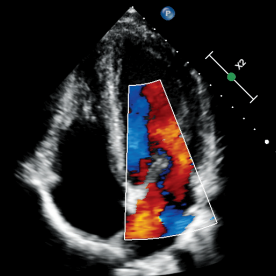
Longitudinal thyroid lobe with nodule



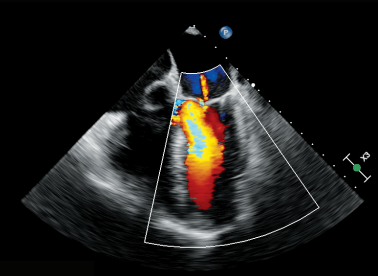
Breast tissue with multiple fibroadenomas



Longitudinal common carotid artery



Cardiac apical four chamber view with mitral inflow

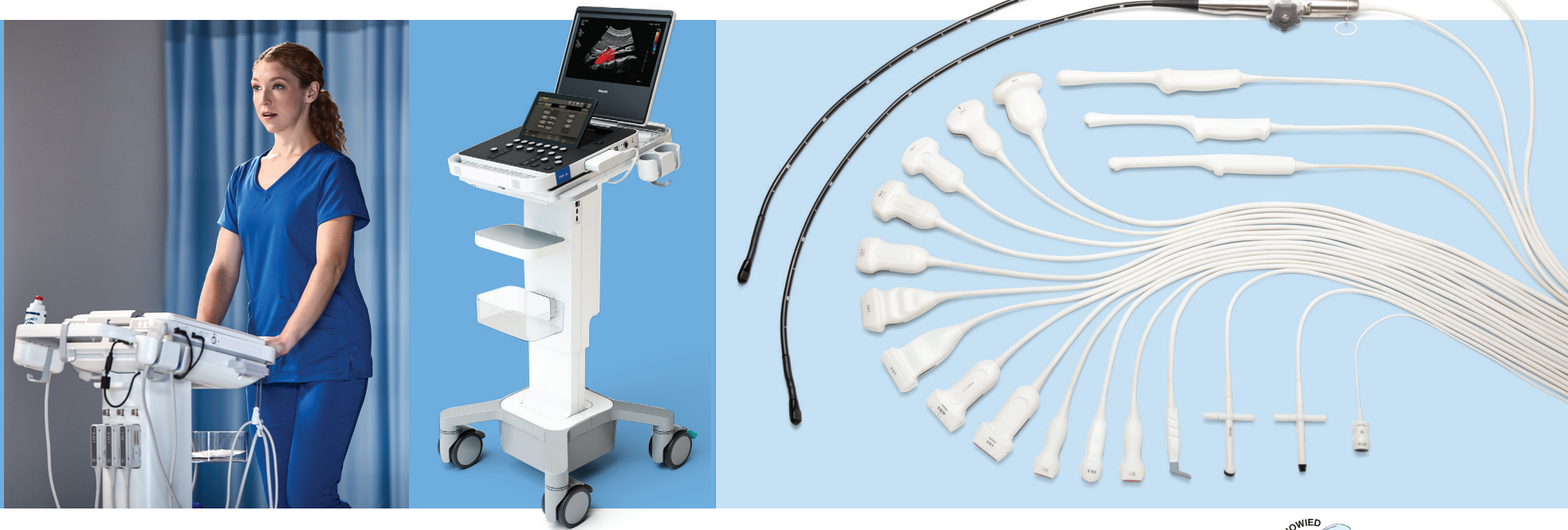


Cardiac transesophageal with mitral regurgitation

\* Philips CX50 system used for comparison.  
External evaluation at two sites with a total of 29 patient exams.

# Premium is now compact

The Compact 5000 series shares imaging architecture and transducers across our premium platforms. This means performance that allows you to see important structures in crisp detail, from deep abdominal views to superficial scans to cardiac imaging, and from small pediatric patients to technically challenging adult body types.



© 2022 Koninklijke Philips N.V. All rights are reserved. Philips reserves the right to make changes in specifications and/or to discontinue any product at any time without notice or obligation and will not be liable for any consequences resulting from the use of this publication. Trademarks are the property of Koninklijke Philips N.V. or their respective owners.

[www.philips.com](http://www.philips.com)

Printed in the Netherlands.  
4522 991 79691 \* NOV 2022



  
**SONOWIED**  
Sonographiesysteme

Sonowied Sonographiesysteme  
Mainstr. 14 • 45772 Marl

Tel: +49 2365 5096 0  
Mail: [info@sonowied.de](mailto:info@sonowied.de)

[www.sonowied.de](http://www.sonowied.de)