

SonoBook™ 7



Adaptive, Agile, Advanced

SonoBook™ 8 is an outstanding ultrasound system with compact, light and robust alloy casing design, tailored for users who need maximum mobility, but also demand powerful functions. With its adaptive, agile and advanced design, SonoBook 8 is the most optimum choice.

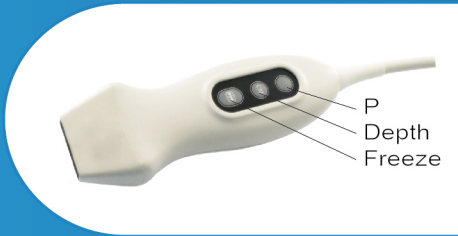


- Instant response.
- Innovative transducer technologies are used for extraordinary cardiac performance.
- Comprehensive cardiac measurement packages: Semi-auto Simpson, PISA, etc.
- Customizable cardiac measurement workflow.
- Probes: Adult & Pediatric phased array.



- Versatile probes covering 1.5 MHz-18 MHz.
- Efficient workflow for different clinical applications.
- Real-time curved panoramic imaging.
- Advanced technologies: Q-beam, Q-flow, Q-image, FHI, X-contrast.
- Extraordinary performance for easy diagnosis.
- Probes: Convex, Linear, Transvaginal, Transrectal, Micro-Convex, etc.

Button-probe



- Remote control of the system through probe buttons, free your left hand for other important work.
- Program the P button, for simple, fast and precise use.
- Provide immediate image refinement with one click.
- Easy control & easy hold.



- Superior anesthesia performance.
- Super Needle enhance needle without degrading the image.
- 2D steer.
- Multi-zoom function for tiny structures, full screen to enlarge the image area.
- Probes: 192 elements linear, 18MHz high frequency probe, button-probe.



- Portable design < 12 lbs.
- Fast and reliable performance.
- Dedicated process for ICU purpose.
- Triple probe connectors and precision cart(option).
- Instant response.
- Excellent battery life, up to 2 hours in active mode, up to 1 week in standby mode.
- Probes: Phased array, Convex, Linear, Micro-convex, Button-probe.



- Fast boot-up.
- Longer battery life up to 2 hours active mode, fast battery swap.
- Auto-ambient adjustment for indoor and outdoor environment.
- Durable & robust design for challenging environment.
- Probes: Phased array, Linear, TV, Button-probe.
- Built-in FAST preset.
- Wifi-compatible.

Small Outside

Ultra

- Ultra-Light < 12 lbs (with battery)
- Ultra-Slim
- Ultra-compact
- Ultra-deep penetration > 30cm
- Ultra-superficial observation < 2mm
- Ultra-slow velocity detection < 2cm/s
- Ultra-high velocity detection > 40m/s (probe-dependent)

Faster

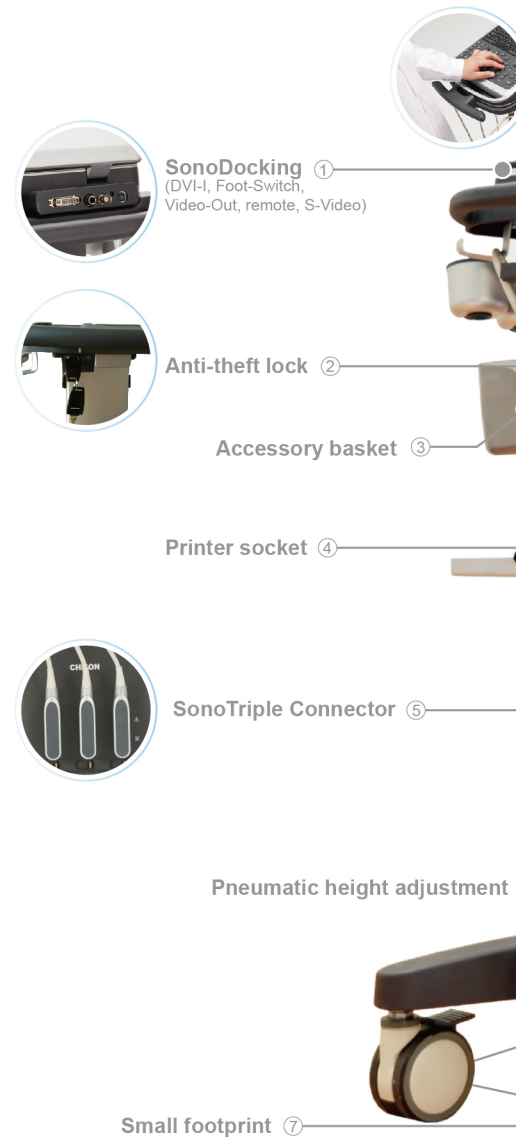
- Boot up around 1min
- Shut down < 12s
- Still image and cine can be saved in 1s
- Instant switch between different modes & measurements

Wider

- Versatile solutions: Cardiovascular, Radiology, Internal Medicine, Small Parts, General Imaging, Vascular, Intensive care, Emergency, MSK, ICU
- Supports wide ranges of probes
- Covering 1.5 MHz- 18 MHz frequency range
- 192 elements high density probe
- Innovative probe (available)
- Large Storage Size (10 thousands of images and cines)



Multipurpose suitcase: either as your backpack, or as carrying case.



SonoDocking ①
(DVI-I, Foot-Switch,
Video-Out, remote, S-Video)

Anti-theft lock ②

Accessory basket ③

Printer socket ④

SonoTriple Connector ⑤

Pneumatic height adjustment ⑥

Small footprint ⑦

Huge Inside



More Connectable

- Intelligent patients' data management
- SonoDocking: DVI-I, Foot-Switch, Video-Out, remote, S-Video
- USB3.0
- Wifi-Compatible
- DICOM: Structure report, worklist, storage, print

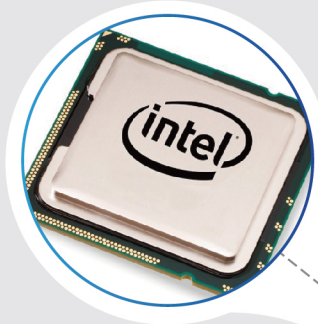
Smarter

- AIO (Automatic Image Optimization for B mode & D mode)
- Auto Measurement: Auto IMT, Auto NT, Auto -trace for PW, Auto-trace for follicles and breast lesions
- User-defined workflow
- Auto-ambient adjustment tailor to indoor & outdoor uses

Greener

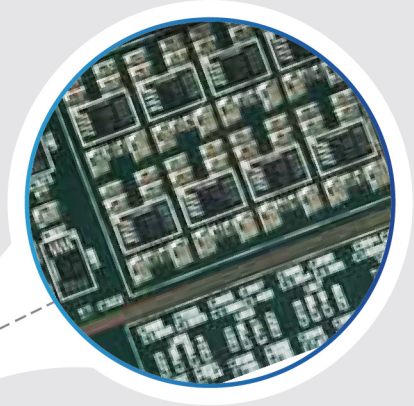
- SSD for lower power consumption
Standby mode to save energy
- Auto-ambient adjustment to save battery life
Low heat and noise design
- Up to 1 week battery life in standby mode
- Up to 2 hours of continuous use in active mode

High-Performance Architecture



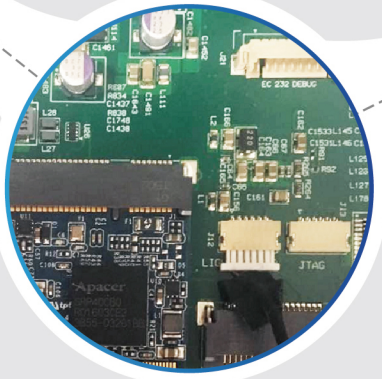
+ WIFI, SSD, ECG

HIGHLY INTEGRATED
POWERFUL MODULE



+ PC

HIGH PERFORMANCE
INTEL PC PLATFORM



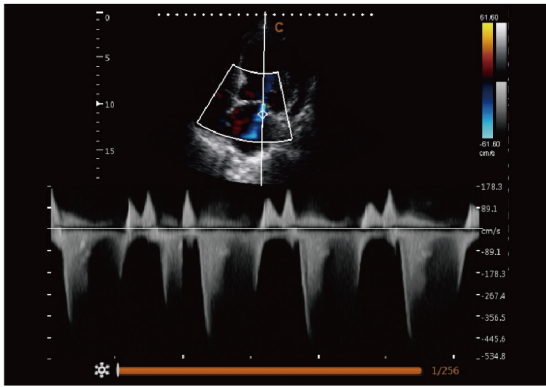
+ TX/RX

THE CUTTING EDGE
TX/RX PLATFORM

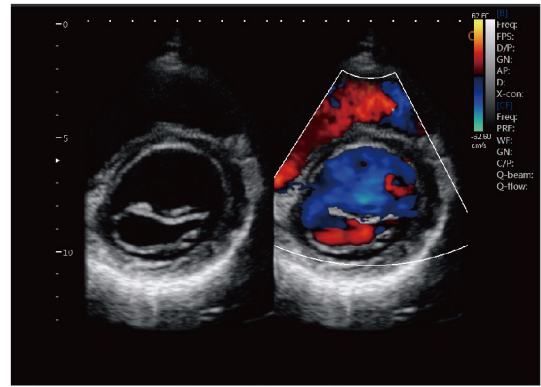


Standby mode

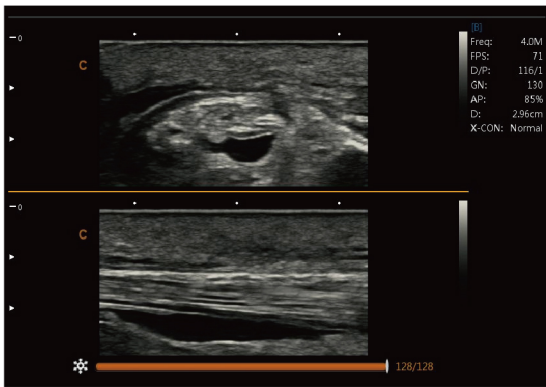
- Smart backstage management enables extended battery life
- Instant power-on



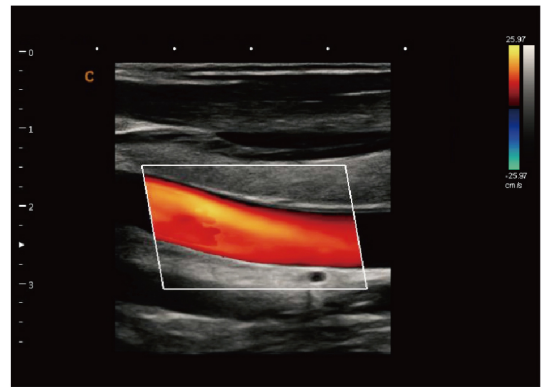
Mitral Valve Regurgitation, CW Mode



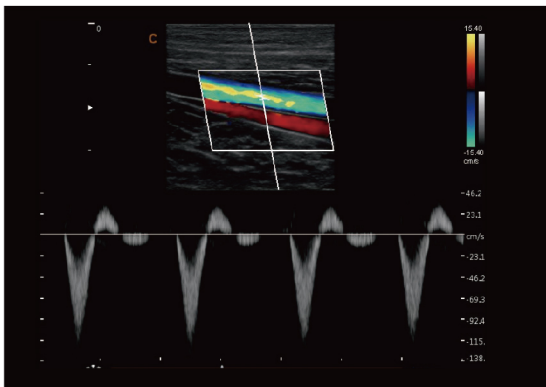
Short axis of mitral valve, B/BC Mode



MSK, B Mode



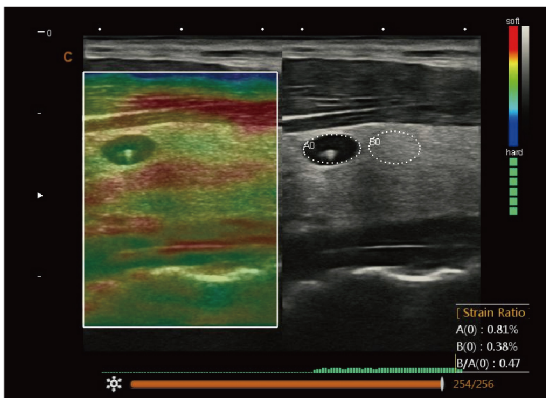
Carotid, C Mode



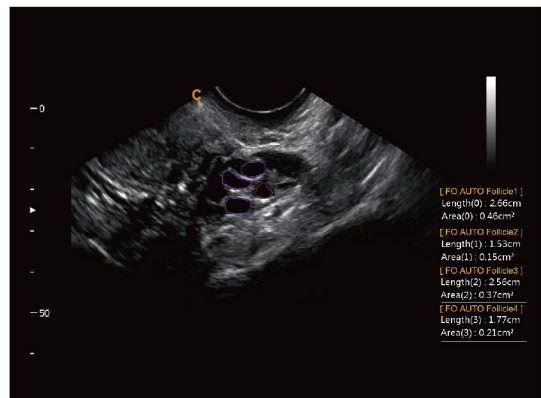
Vessel, PW mode



Gallstone, Zoom Mode



Thyroid nodule, Elastography



Auto-trace follicle measurement



2.0MHz-6.8MHz
Convex
C3-V



4.0MHz-15.0MHz
Linear
L7-V



7.0MHz-18.0MHz
(With FHI) Linear
L12-V



4.0MHz-15.0MHz
Linear
L8M-V



5.0MHz-14.0MHz
Linear
L8M5-V



4.0MHz-15.0MHz
Linear
L7SVA-V



4.0MHz-15.0MHz
Linear
L12b-V



1.5MHz-5.3MHz
Phased array
P2-V



2.0MHz-8.0MHz
Phased array
P5-V



4.0MHz-12.0MHz
Transvaginal
E6-V



4.0MHz-15.0MHz
Transvaginal
E7W-V



4.0MHz-15.0MHz
Trans-Rectal
R7-V



2.0MHz-6.8MHz
Micro-Convex
MC3-V



4.0MHz-12.0MHz
Micro-Convex
MC6-V

CHISON Medical Technologies Co., Ltd.

Sales & Service Contact Address:

No.3, Xinwu District, Wuxi, Jiangsu, China 214115

TEL : 0086-510-85310937

FAX : 0086-510-85310726

EMAIL : export@chison.com.cn