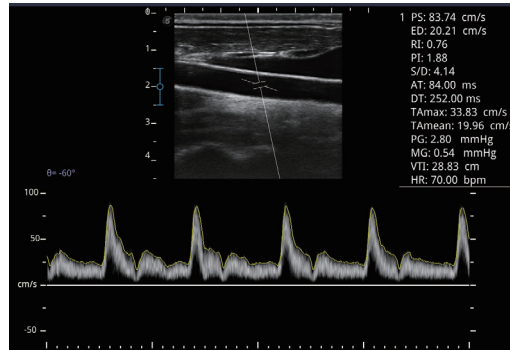
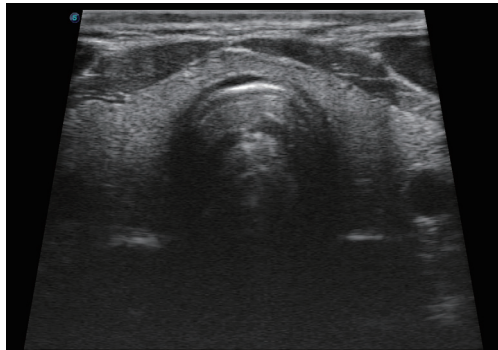
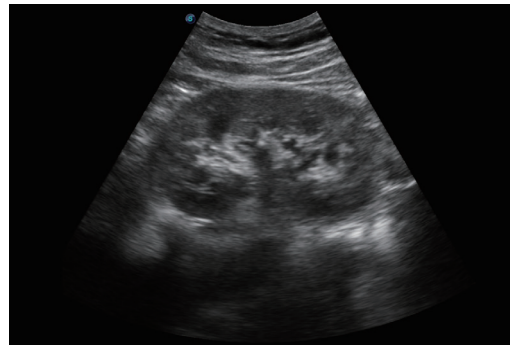
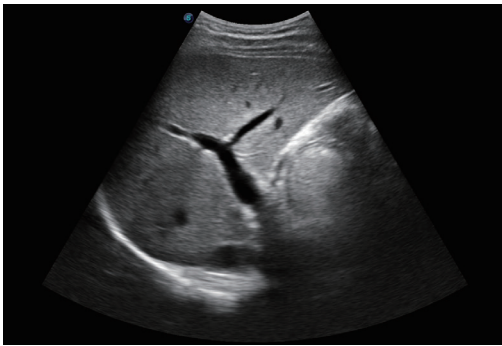


SonoScape

E1 Pro, as a new hand carried BW ultrasound model, is equipped with complete functions which enhances its competitiveness among entry level ultrasound models. It not only provides satisfying image quality but also brings users a smoother workflow experience.



Suited to Your Needs



Efficient Diagnosis

- μ -Scan, Speckle Reduction & Edge Enhancement
- Spatial Compound Imaging
- PIH - Pure Inversion Harmonic
- Wide Scan - Enlarged Image Area
- PW Doppler
- Chroma - Highlight Image Details
- B Steer for Linear Probe

Ergonomic Designs

- Up to 2 Transducer Ports
- Light Weight and Compact
- 15.6 inch Anti-flickering HD LED Screen
- Tilting Monitor Angle Adjustment
- Backlit Keyboard and Intelligent Panel
- Long-lasting Battery for 90mins

Ease of Use

- Quick Boot Up
- Auto Brightness Adjustment
- Auto Image Optimization
- Auto IMT
- Auto Trace

Equipped Accessories

- Wi-Fi and Bluetooth Available
- DICOM
- 500GB Hard Disk
- Height Adjustable Trolley
- Durable, Carry-on Site Suitcase

SonoScape

SonoScape Medical Corp.

2F, 12th Building, Shenzhen Software Park Phase II, Keji Middle 2nd Road, Nanshan District, Shenzhen 518057, Guangdong, China
Tel: +86-755-26722890 Fax: +86-755-26722850
Email: market@sonoscape.net www.sonoscape.com